



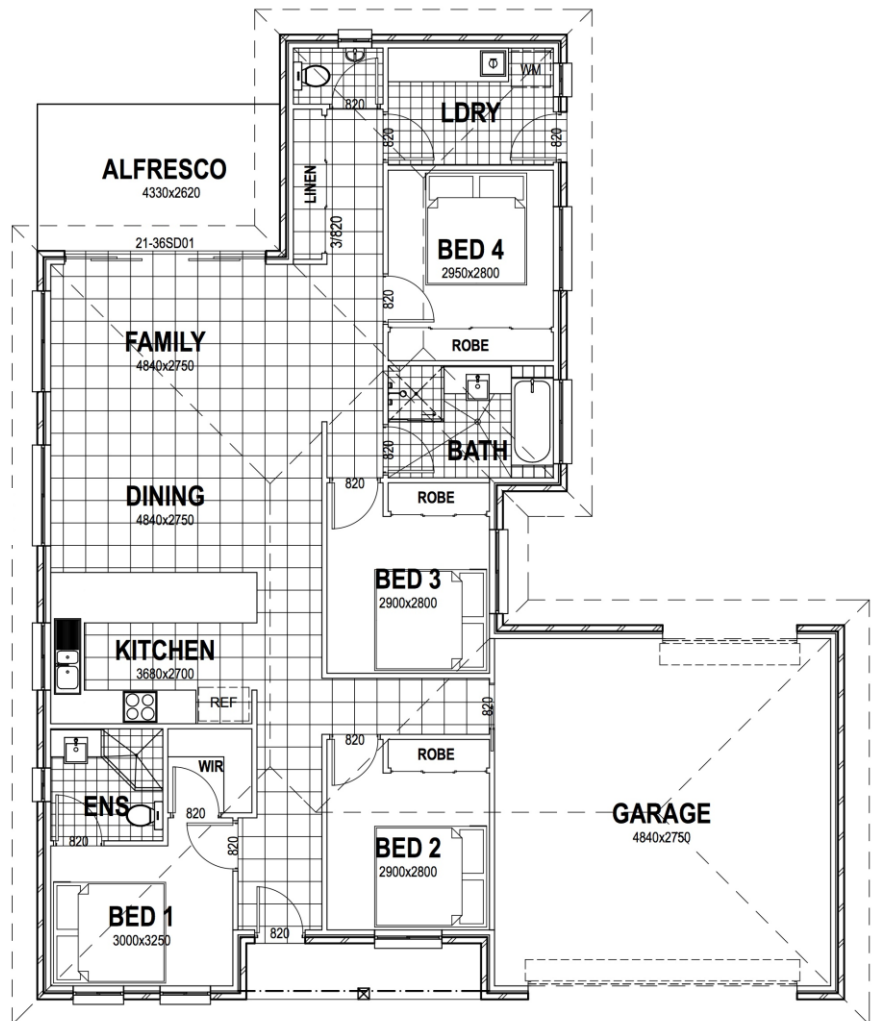
# Acacia

The Acacia is a superb plan for first home buyers or investors. This plan offers maximum lifestyle at a fantastic move in price. The Acacia ticks all the boxes for the smart buyer - 4 bedrooms, ensuite, walk in robe and double garage. There is also an optional alfresco area. Value and quality assured with this plan.



## Specifications

Living:	130m <sup>2</sup>
Garage:	40m <sup>2</sup>
Patio:	4m <sup>2</sup>
Alfresco:	11.34m <sup>2</sup>
<b>TOTAL AREA:</b>	<b>185.34m<sup>2</sup></b>



*Your dream home at an affordable price*

wjmhomes.com

(02) 6762 6860

wjmhomes@bigpond.com