



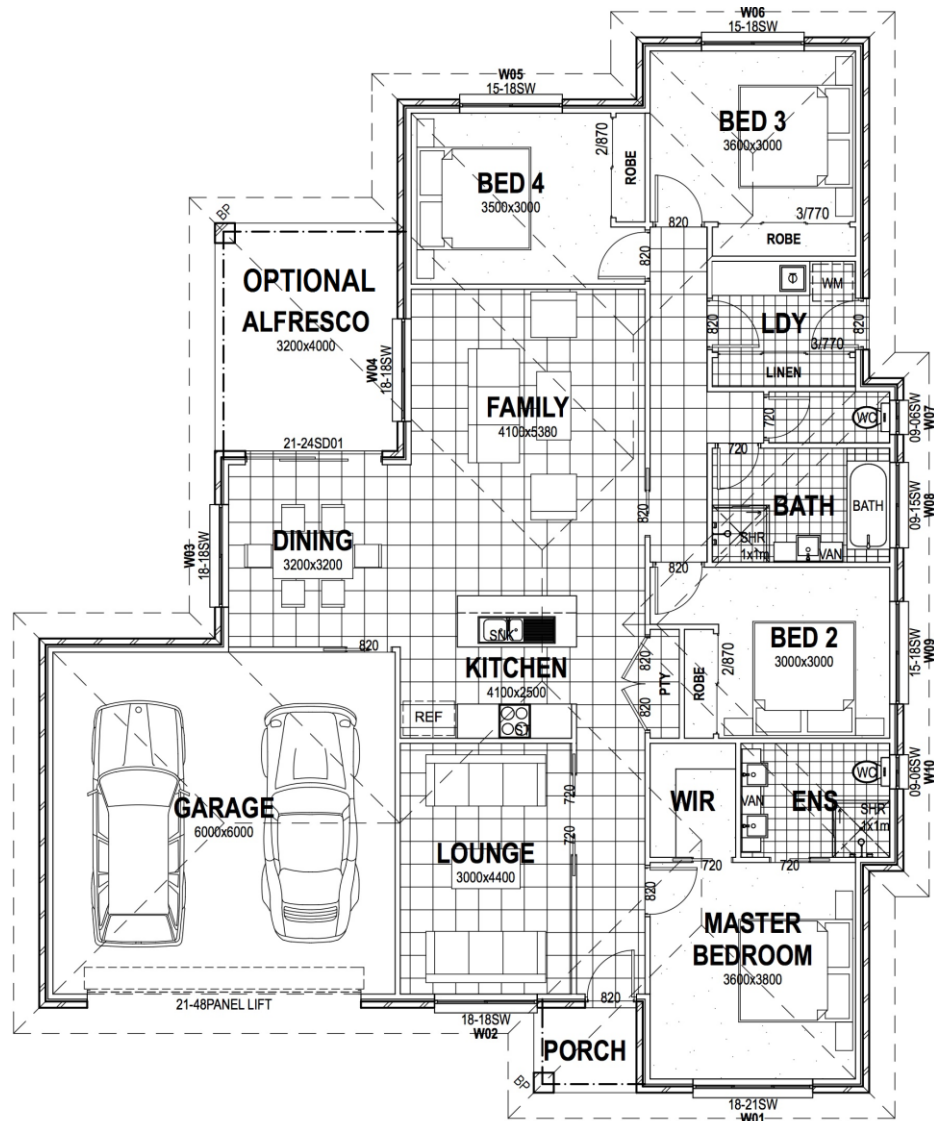
Austin

The Austin Plan is an economical 4 bedroom plan, that would suit a narrower frontage block. The Master bedroom offers an ensuite and walk in robe and the living areas are all located to enjoy the best possible aspect, which not only makes this plan energy efficient, but flexible enough to suit most blocks. The Austin offers comfortable lifestyle for the family on a budget.



Specifications

Living:	159.1m ²
Garage:	39.6m ²
Patio:	2.7m ²
Alfresco:	12.8m ²
TOTAL AREA:	214.2m²



wjm homes

Your dream home at an affordable price

wjmhomes.com

(02) 6762 6860

wjmhomes@bigpond.com