



Mirage

The Mirage has been designed to suit a rural residential block. It offers a separate lounge and spacious open plan living areas. The rear of the home is designed to capture any northerly or easterly views.

Specifications

Living:	178.9m ²
Garage:	40.4m ²
Patio:	3.6m ²
Alfresco:	16.8m ²
TOTAL AREA:	239.7m²



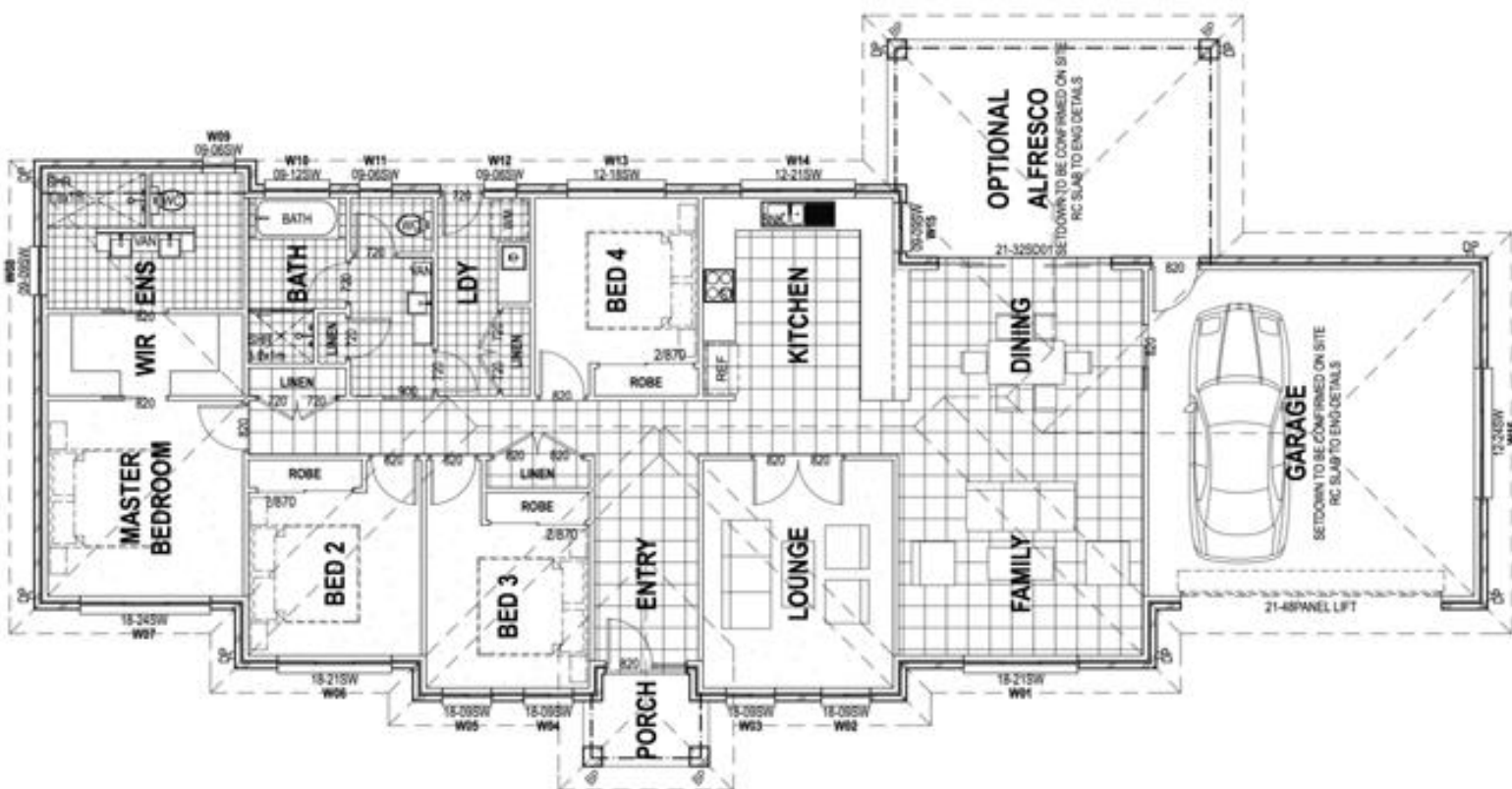
4



2



2



Your dream home at an affordable price

wjmhomes.com

(02) 6762 6860

wjmhomes@bigpond.com